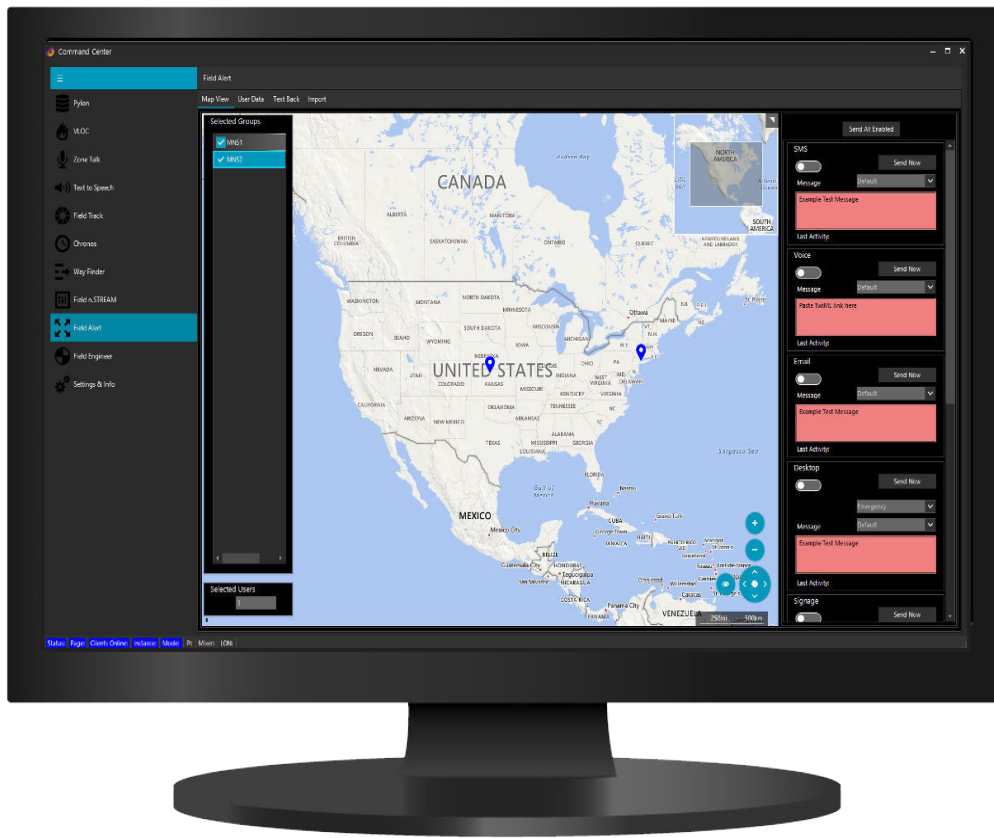


Command Center



COMMAND CENTER

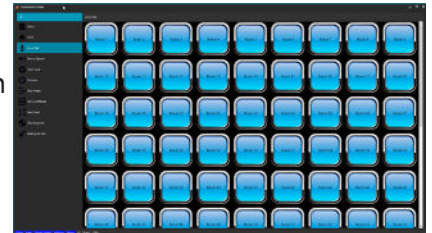
Command Center is Mercury Notifications centralized configuration, operations and activation software application. Command Center is accessible from any network connection and leverages secure User ID and Password login.

Overview:

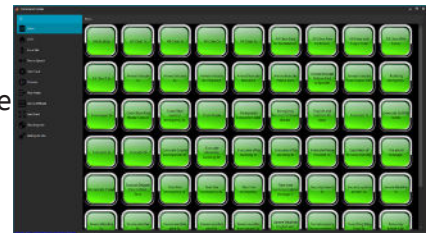
Command Center is a windows based application that centralizes all the control of a Mercury n.FORM or Mercure system. It contains various modules that perform monitoring and control of those systems. The modules are organized in the Command Center framework to facilitate a "Single Piece of Glass" view of the entire eco system. Each module is individually licensable to allow your system to grow over time as new modules are developed by Mercury. A centralized logging system is also include that logs the actions of each module. There is also a common Settings module contains the vast majority of settings for all modules, allowing for a common User Interface Experience. Lastly the UI can be skinned in various Themes allowing for user preference of visualization.

Modules:

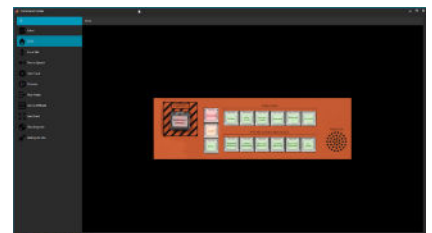
PYLON: This module provides a way to trigger prerecorded messages in both n.FORM and Mercure systems. Messages are organized in a pallet of large buttons that can be configured by the user to have as many prerecorded messages(PRM) as needed. Pressing the button will activate the appropriate message and flash to show that the message is playing and stop flashing when the message is either done or canceled.



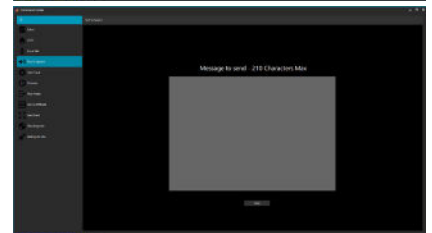
Zone Talk: This module allows the user to override the next all call page to be directed to a particular paging zone. This is typically used for microphone paging such as when communicated with TalkBack devices. The required zone button is pressed, and then the page is manually made, by the microphone, and the system will automatically reroute the page to that zone. If Talkback devices are also present in the system, any device actuation such as PTT or Panic will illuminate that zones button, to facilitate the user to address that particular zone quickly.



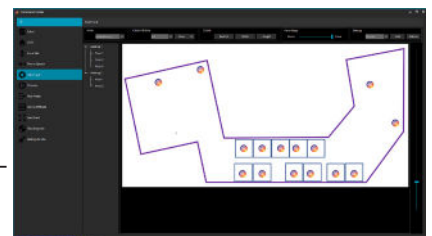
VLOC: The VLOC module acts as a Virtual Operations panel for the n.FORM Headend. It allows you to trigger the PRM's and Zone overrides of the headend, just as if you were in front of the headend. For UL2572 projects you can also override the FACP direction from the VLOC application.



Text to Speech: This module will allow you to enter a textual message and covert it to audio that is played through the n.Form Headend.



Field Track: Field Track works in conjunction with n.FORM Talkback units, to facilitate tracking motion and ambient sounds through a facility. The module retrieves both Motion and ambient sound status and history from the Talkback devices and renders it on a map of the facility. This could allow for near real-time tracking of someone's motion through the space, as well as visualizing the location of loud ambient sounds.



Chronos: Chronos provides the user with the ability to schedule PRM announcements based on time of day, and duration of an event. This functionality is typically used in Schools for class bell scheduling and can also be used for shift change and break period tones/announcements.



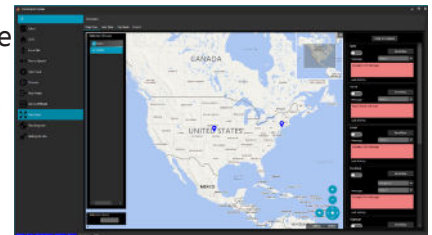
Way Finder: Way Finder is a digital signage solution that provides guidance to people during emergency or routine events. Each button shown represents a part of a scenario. The combinations of buttons form a specific scenario that presents a specific set of digital content being sent to up to 10 digital signs, and 10 indicator lights. A typical application could be dynamic stairway instructional signs driven by buttons that represent the state of each stairway, such as open or blocked.



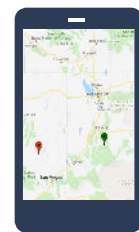
Field n.STREAM: This module works in tandem with the Mercure system's PI device, to provide audio inputs and outputs to a Mercure system, from the MNUC headend. EQ and volume control are provided for both paging and music sources. In addition, spectral visualization widgets indicate the actual audio being sent to both sources. The output the PI is then sent to either Mercure MOP devices or directly to 3rd party systems as line level audio along with a page enable dry contact output.



Field Alert: Field Alert is a complete DRMNS mass notification system. It contains various messaging channels that can be used to send alerts to people in multiple ways. These channels include SMS messaging, Voice Calling, Email notifications, Desktop alerts, Digital Signage Visualization, Tweeting, and even Microsoft Teams channel alerts. In addition you can automatically send out a conference call request to up to 100 people and have the system call each person and place them in a conference bridge, without the end user having to do anything other than picking up the call. All of these messaging channels are independently selectable, and triggered manually by the Command Center user. The target end users are selected in a map view, based on group memberships. User data can be imported by csv or via Active directory. To facilitate user feedback, there is the TextBack functionality that logs all outgoing SMS alerts, and any responses from users. Each response can be selected to allow the operator to send a message directly to that recipient.



Mobile Ready: From the touch of a button, Command Center allows the user to trigger pre-recorded messages to any configured zones, buildings or even campus wide among many buildings from a smart phone. Mercury systems and head-ends are able to communicate with one another allowing for complete unification of multiple systems.



Command Center User Guide



Scan QR code below or visit mercuryn.com.